



American
Heart
Association.

Guiding heart failure teams to optimal patient care



Adherence to evidence-based guidelines improves heart failure patient care. The American Heart Association works with hospitals to enhance the quality and accessibility of heart failure care worldwide by offering International Heart Failure Center Certification.

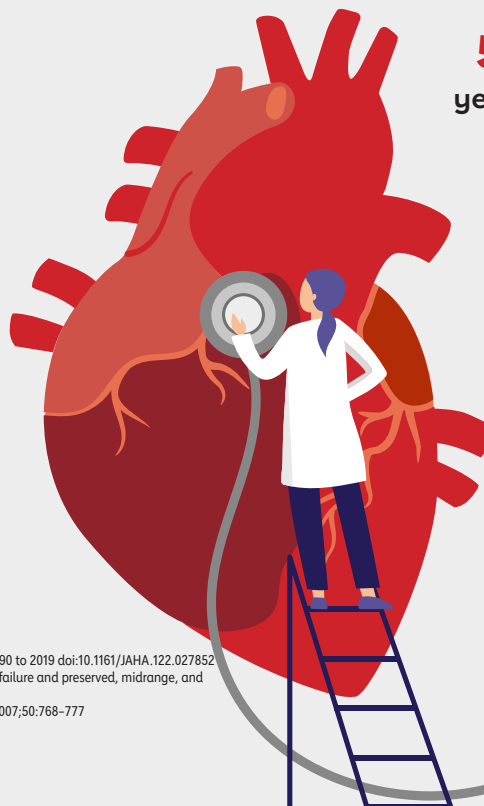
The Impact of Heart Failure

In 2019, there were **56.17 MILLION** prevalent cases of **heart failure**.¹

Studies report that **ischemic heart disease, hypertensive heart disease and chronic obstructive pulmonary disease (COPD)**, all prevalent worldwide, are significant **risk factors for heart failure**.¹

Heart failure resulted in **5.05 MILLION** years lived with disability (YLDs).^{1,2,3,4}

The age standardized rate (ASR) of heart failure increased by **0.6% from 2017 to 2019**.¹



¹ Burden, Trends, and Inequalities of Heart Failure Globally, 1990 to 2019 doi:10.1161/JAHA.122.027852

² Significance of ischemic heart disease in patients with heart failure and preserved, midrange, and reduced ejection fraction Circ Heart Fail 2017;10:e003875

³ OPTIMIZE-HF Investigators and Hospitals J Am Coll Cardiol 2007;50:768-777

⁴ Framingham Heart Study CIR. 0000039105.49749.6F.



Outcomes improve when providers and hospitals follow **data-driven processes** and procedures that lead to the development, management and implementation of **high-quality care**.

About International Heart Failure Center Certification through the American Heart Association

Integrated, Collaborative Heart Failure Care Across Service Lines with Reduced Errors and Improved Outcomes

The American Heart Association's International Heart Failure Center Certification is a hospital-based, continuous quality improvement program helping hospitals and healthcare providers apply evidence-based treatment therapies, preventative measures and outpatient care to heart failure patients.

- International Heart Failure Certified Centers must document and demonstrate how their organization has committed to providing quality care.
- The de-identified data collected allows hospitals to identify gaps based on observed trends and patterns to reduce variations in care.
- Previously collected data can be uploaded into Get With The Guidelines® to start seeing areas to target for immediate improvement easily. This also reduces the burden on staff time.

Level of Care

Designated care for heart failure patients in a dedicated unit

Heart failure clinic to meet the needed follow up care

Interdisciplinary team available to meet the medical, recovery and social needs of the patient

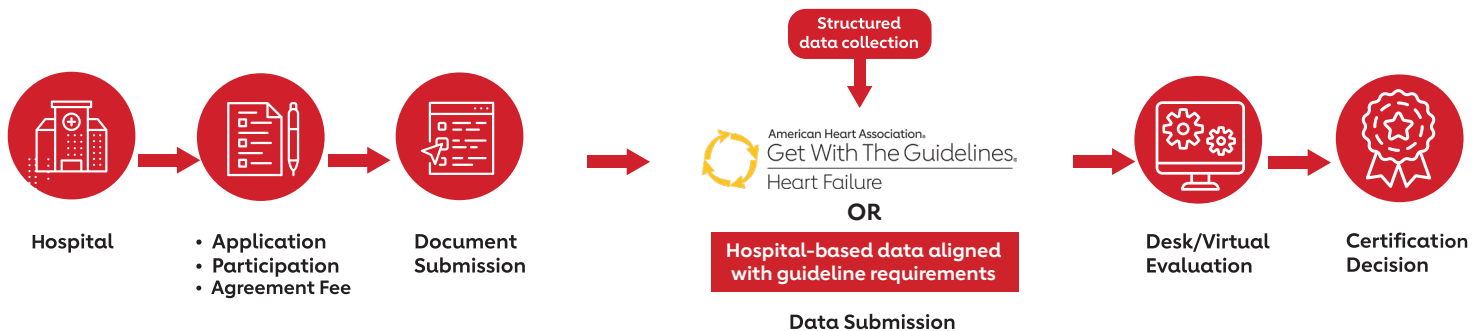
Operating room and angio suite

Dedicated heart failure team with robust quality improvement initiative in place with heart failure specific education available for the care team

Heart failure experts available 24/7 with on-call schedules as well as a dedicated medical director, coordinator and abstractor

Cardiovascular services available 24/7 with on-call schedules

Map to International Heart Failure Center Certification



Benefits of International Heart Failure Center Certification through the American Heart Association

Certification supports your hospital in its work to achieve:

- ✓ Continuous and effective quality improvement in coordinated heart failure care
- ✓ Improved outcomes and survival in your community
- ✓ Reduced errors
- ✓ Improved efficiency
- ✓ Improved financial outcomes
- ✓ Recognition from a trusted brand in patient and community health
- ✓ Implementation of consistent and standardized care processes
- ✓ Education for healthcare professionals and the community
- ✓ Participation in research opportunities



Support For Implementation

The evidence-based guidelines for heart failure care are at the foundation of the International Heart Failure Certification program and **Get With The Guidelines®-Heart Failure**. Your hospital will receive world-class support to implement guideline-directed therapies equitably to all patients.

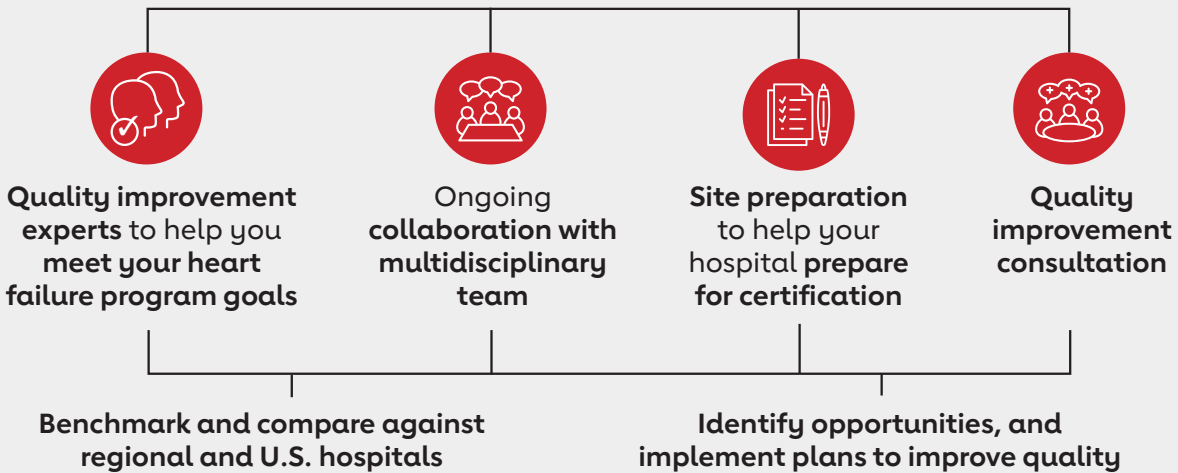
Support from the American Heart Association includes:



Examples of structure to **build your heart failure program team**



Comprehensive Program Manual,
a best practice guide offering:



Powered by the World-Class Science of the American Heart Association

The American Heart Association has engaged in international efforts to save lives around the world. Our collaborative initiatives with global organizations provide support to governments, health care providers, hospital and pre-hospital systems and communities. Through these concerted efforts, we aim to enhance cardiovascular health outcomes and reduce the global burden of heart failure and related diseases.



Learn More

Scan or visit www.Heart.org/InternationalQI to learn more.